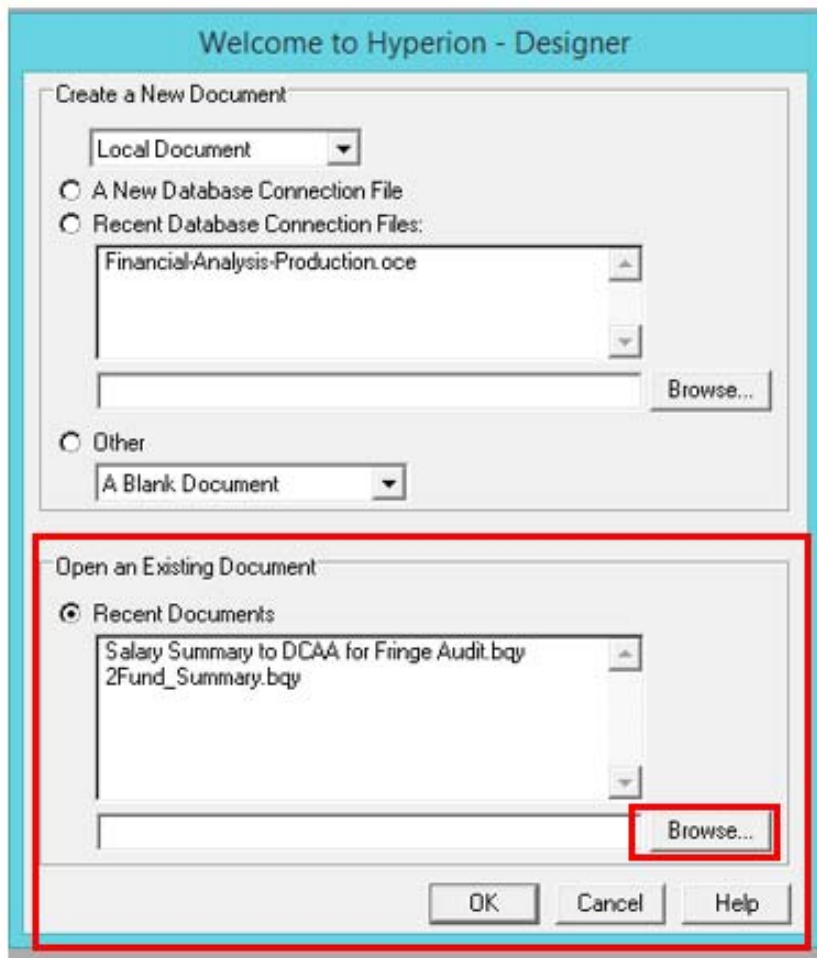


Brio/EPM Data Warehouse Hyperion Designer via Citrix Server:

- EIS Applications login: <https://iacscitrix.win.rpi.edu/Citrix/IACSApplcationsWeb/>
- Open Hyperion Designer – server



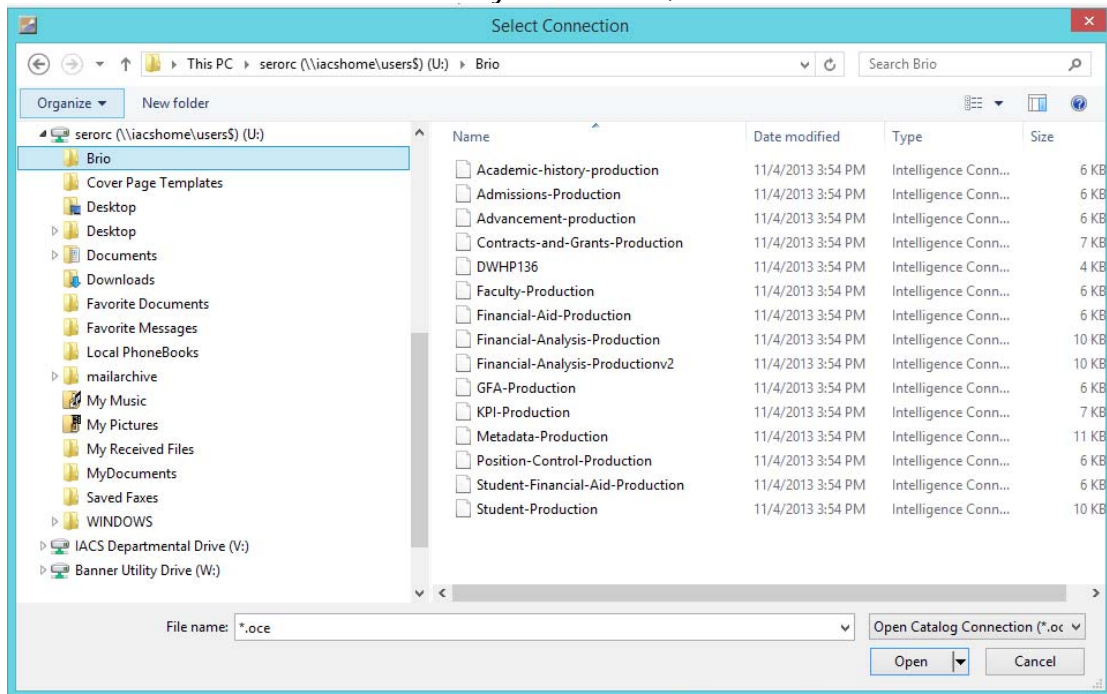
- From "Open an Existing Document"
 - Select Recent Documents
 - Select one from list or
 - Select Browse to navigate to a server to find the bqy



- The first time you process it, it will need to connect to your local OCE data connection files. Should receive a warning like this:



- Select OK
- Your OCE connection file is on your U-drive, in the Brio folder:



- Select the appropriate OCE file for the data mart you are working with
- Note: If bqys are shared on the server, each user will need to connect each time to their own OCE files